

9 Parkfield Avenue , Manchester, M14 4HL

FIVE BEDROOM, TWO BATHROOM HOUSE SHARE Park Lane Estate Agents are pleased to offer To Let this FIVE BEDROOM, TWO BATHROOM house share, which has been modernised throughout, offering a premium rental opportunity for students and young professionals. Bedrooms are on offer from £650.00 to £850.00 Per Calendar Month. Located on Parkfield Avenue, a popular residential road within close proximity to a wealth of local amenities, including transport links, shops, restaurants, playing parks and Manchester Royal Infirmary. The internal accommodation comprises an entrance hall, ground-floor front bedroom, communal kitchen/reception room with under-stairs storage, utility room, ground-floor rear bedroom, stairs to the first-floor landing, first-floor front bedroom with en-suite, first-floor rear bedroom, communal bathroom, and large loft bedroom. The property is uPVC double glazed throughout and warmed by gas central heating. Contact us now to arrange your viewing!

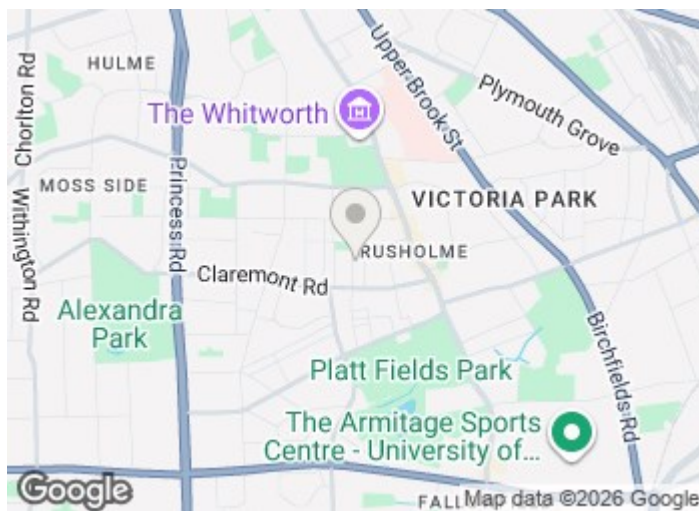
£650 Per Calendar Month

9 Parkfield Avenue

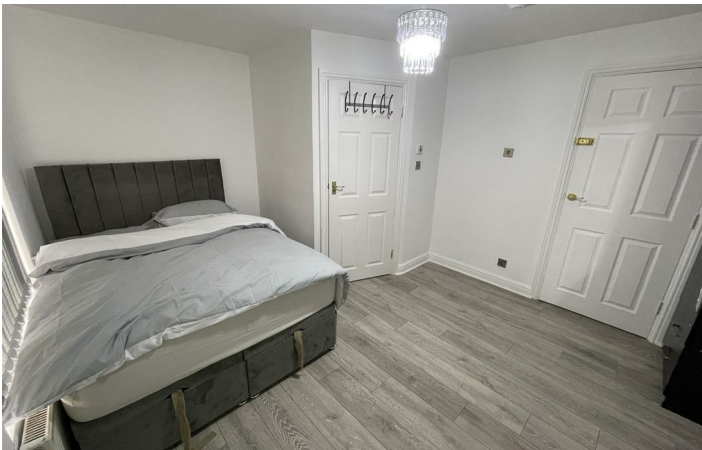
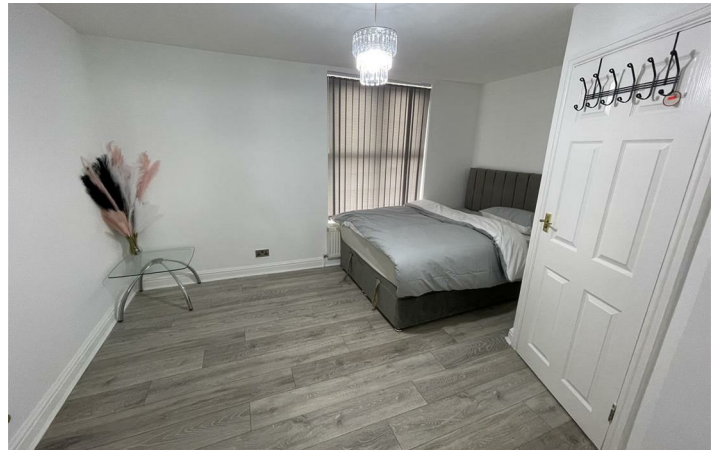
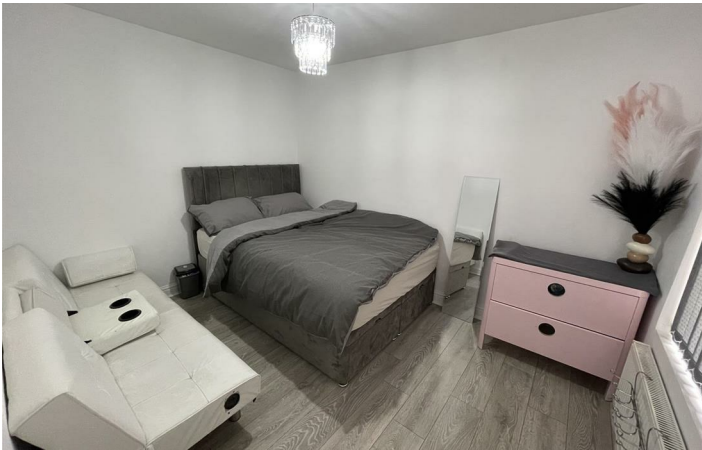
, Manchester, M14 4HL



- FIVE BEDROOM, TWO BATHROOM HOUSE SHARE
- CLOSE PROXIMITY TO TRANSPORT LINKS AND AMENITIES
- PRICES RANGE FROM £650.00 TO £850.00 PER CALENDAR MONTH
- GAS CENTRAL HEATED AND UPVC DOUBLE GLAZED THROUGHOUT
- MODERNISED THROUGHOUT
- CONTACT US NOW TO ARRANGE YOUR VIEWING



[Directions](#)



Floor Plan



FIVE BEDROOM TERRACED HOUSE

TOTAL FLOOR AREA : 882 sq.ft. (81.9 sq.m.) approx.
 Whilst every attempt has been made to ensure the accuracy of the floorplan contained here, measurements of doors, windows, rooms and any other items are approximate and no responsibility is taken for any error, omission or mis-statement. This plan is for illustrative purposes only and should be used as such by any prospective purchaser. The services, systems and appliances shown have not been tested and no guarantee as to their operability or efficiency can be given.
 Made with Metropix ©2025

These particulars, whilst believed to be accurate are set out as a general outline only for guidance and do not constitute any part of an offer or contract. Intending purchasers should not rely on them as statements of representation of fact, but must satisfy themselves by inspection or otherwise as to their accuracy. No person in this firm's employment has the authority to make or give any representation or warranty in respect of the property.

